

MOUSSON GmbH

Real-Time Bearing Condition Monitoring Solutions

Bearing Units - the Paramountcy of your machine

Bearing Units – are one of the most important parts of the today's industrial and mobile equipment.

Unexpected Bearing Unit Damage can create catastrophic effects, started by damaged shafts or/and rolling parts and ends up by completely crashed machines, destroyed constructions, heavily injured or even killed humans.

Not seldom Bearing Unit Damages end up in unplanned equipment stop, causing consequential damages of hundreds thousands or even millions of dollars.

Regularly planned maintenance work does not defend from the possible suddenly occurred Bearing Unit Damage, caused for example by inadequate or poor quality greasing, unacceptable and unallowable working conditions as well as by possible hidden defects of the various single parts of Bearing Units in work.

Conventional technologies take unacceptable risks

Well known today's technologies of vibration, temperature or echo measurements allow certainly and safely to discover Bearing Unit Defects, **which are already happened and exist**.

This way, even discovered by those technologies Bearing Unit Defects, end up either in **immediate unplanned machine stops** or in **unfounded risk of further equipment use** with doubtful sometimes even with criminal objective: **minimize unexpected commercial damages**:



ICE - Catastrophe by Eschede, Germany, 1998

Revolutionary Status & Condition Monitoring

In order to avoid or minimize the described hazards and risks serious research was done. **The solution, which generates essential Real-Time information about current Bearing Unit Status and Bearing Working Conditions as well as creates Preventive Service Advises was found and patented.**

As outcome of years of investigations, researches, measurements and tests **on the real Railway applications the new Ultrasonic Bearing Condition Monitoring approach was qualified.** Based on the UBCM technology we offer:

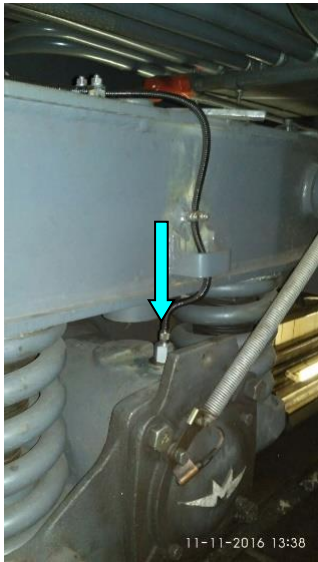
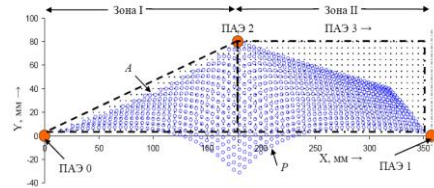
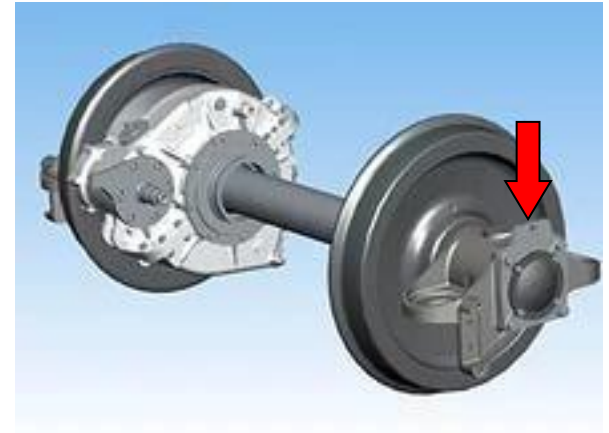
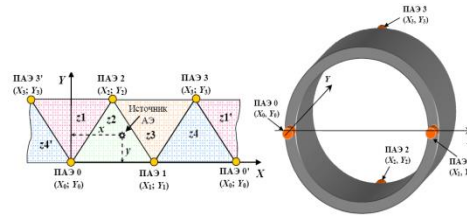
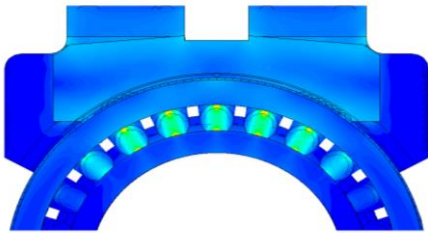
On-Board Monitoring and Control Systems

On-Rail Monitoring and Control Systems

Portable Bearing Condition Analysers

Our patented systems offer **Real-Time Working Conditions Monitoring** of the Bearing Units using High Frequency Ultrasonic Waves.

Ask us for Revolutionary System details



СОСТАВ > Вагон #3 **ПРЕДУПРЕЖДЕНИЕ** **i 11**

>> 75 км/ч

D ave 76 **D max** 99 **i alert** **o Fh6**

СОСТАВ > Вагон #3 > Тележка #1 **i 11**

1	11%	1	95%
2	67%	2	88%
3	91%	3	76%
4	45%	4	51%
5	65%	5	97%
6	90%	6	99%